

Bloomfield Lodge

BEAUTIFULLY REMOTE



*Hidden treasure in
Far North Queensland*

*Looking for a little luxury on your way back
from your Cape York adventure?*

Unique, enchanting and beautifully remote, Bloomfield Lodge is a hidden gem. A luxury boutique hideaway set on the shores of the Coral Sea and in the heart of the pristine World Heritage Daintree Rainforest in Far North Queensland. This rainforest eco lodge is one of Australia's most exclusive getaways, where luxury accommodation goes hand in hand with gourmet dining.

Adventurous spirits can take advantage of Bloomfield's unique location and experience some of the highlights of Tropical North Queensland, discover Australia's most incredible plant, animal and marine life with a guided rainforest walk or a cruise along a jungle fringed river. Visit cascading waterfalls, spend a magical day snorkeling on the Great Barrier Reef without another boat in sight or enjoy some of the world's finest game fishing.

A member of Small Luxury Hotels of the World and ranked No1 in Forbes Magazine as the 'Worlds Best Remote Hotel', Bloomfield Lodge provides the perfect sanctuary to get away from it all.

Experience nature at its best in one of the most naturally diverse areas on earth, the Daintree Rainforest has remained virtually untouched for millions of years and exploring it is an unforgettable experience. Led by a highly knowledgeable guide the rainforest walks, operated by the Lodge offer a fascinating insight into the mysteries of the tropical rainforest, its magnificent ecosystem and the flora and fauna that inhabit it. Home to over a fifth of Australia's bird species and some of the world's largest and most striking butterflies, the animals and insects you encounter will be by chance.

On the door step of Bloomfield Lodge is the Bloomfield River said to be the prettiest river on the Coral Coast, home to a fascinating eco-system and a diverse mix of native wildlife. Take a two hour relaxing jungle cruise upriver as far as the local Aboriginal community of Wujal Wujal, with plenty of opportunities to admire various species of water and sea birds and maybe even spot a flying fox or a crocodile or two! Along the way, Bloomfield's experienced guides will explain the Mangrove ecology, show you the ant plant and give you a brief history of the River.

Both the guided rainforest walk and Jungle river cruise are complimentary to all guests staying 4 nights or more.

Just across the bay from Bloomfield Lodge lies the wonder of the World Heritage Great Barrier Reef, guests at the lodge can enjoy a magical day aboard our purpose built catamaran, the Bloomfield Explorer, visiting one of three locations on the Reef with our experienced skipper and knowledgeable guide. The day combines both snorkeling and fishing with a gourmet lunch provided. The Great Barrier Reef is

Continued on page 86.

home to 1500 species of fish, 360 species of hard coral, one third of the world's soft corals, and 54 species of sea and shore birds. During the winter months there is every chance of spotting the majestic hump back whale.

This trip takes you away from the crowds and with a maximum of 12 guests. This is a very special and personalised way of experiencing this amazing natural wonder.

ideal place for a leisurely spot of fishing (as well as to watch the magnificent sunsets). Some of the fish that can be caught from the jetty include Barramundi, Mangrove Jack, Fingermark, Bream, Cod, Shark, Tripletails, Mackerel, Queen Fish and Trevally. Bait, tackle and a little friendly advice if required, is available free of charge to anyone who wants to try their hand.

Alternatively if you are looking for something a little more adventurous the Lodge offers a Half Day

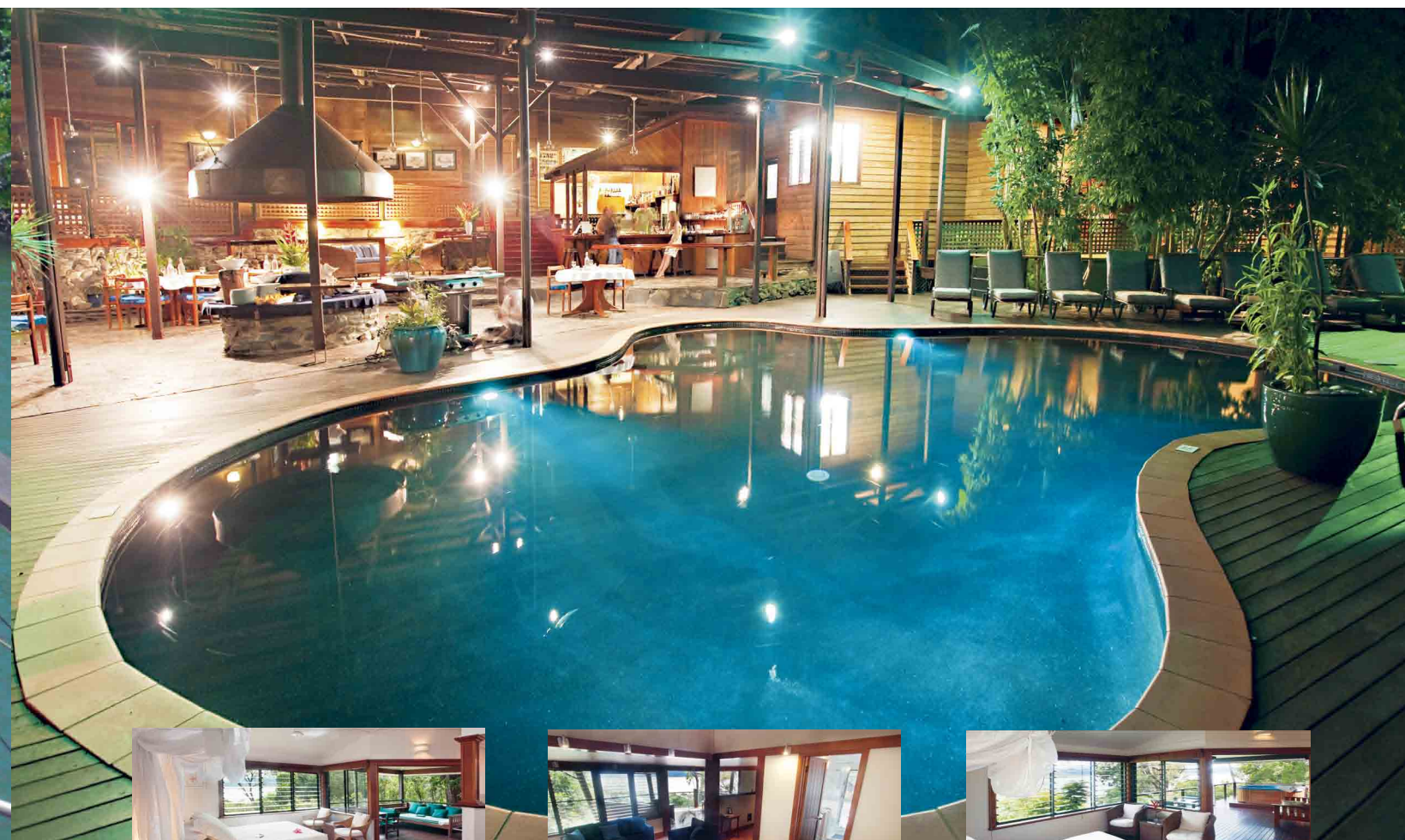
inhabit the Great Barrier Reef.

For the more experienced fisho the Lodge offers sport fishing whilst enjoying the picturesque local surrounds aboard our custom built fishing vessel the Paradise Kingfisher. Specifically designed for local conditions its equipped with everything required to chase the elusive tropical prize fish.

Tours are structured depending on season, tide

The Lodge itself is set in a beautiful combination of ancient rainforest canopy and landscaped gardens, with a pool, al fresco dining room and bar in the main lodge area. The individually designed natural timber retreats encircle the main lodge with each site specially chosen for its naturally beautiful surroundings to ensure Bloomfield Lodge's rooms are a guest's personal haven throughout their stay.

All rooms have large picture windows bringing



The journey out to the reef is less than an hour and the fishing on the way home appeals to both the experienced fisherman or those new to fishing and just want to try their hand, with the guides baiting the hooks and unhooking the fish, all you have to do is pull the fish in.

Far North Queensland is home to some of the best fishing on Earth with a mind blowing range and diversity on offer. The Bloomfield Lodge jetty is the

Fishing Adventure. A fun filled morning with our highly experienced and enthusiastic crew onboard the Bloomfield Explorer.

You head to the secret spots that have been tried and tested to catch that fish of a lifetime! Some of the recent catches have been Red Emperor, Coral Trout, Big Chinaman Fish, Gold Spot Cod, Black King, Sweetlip and the hard fighting Spanish Mackerel. In fact it could be any 1 of 1500 different species that

and weather conditions – fishing creeks, headlands and inshore reefs. Targeted species include Mangrove jack, Queenfish, Nannygai, Giant Trevally and the iconic Barramundi.

Our fishing guides are keen local sport fishermen, who spend much of their spare time fishing these very waters, perfecting their techniques and experimenting with new systems.

the outside in and a verandah with stunning views of the rainforest and Weary Bay. Rooms are equipped with en-suite bathroom, ceiling fan, mini bar, tea and coffee making facilities, direct dial telephone, complimentary drinking water, mosquito nets, insect repellent, bath and beach towels, bathrobe, slippers,

Continued on page 88.



hairdryer, premium toiletries, torch and umbrella.

One of the highlights of a stay at Bloomfield Lodge is the gourmet dining. Combining fresh, local ingredients, a dash of Aussie authenticity and plenty of creative flair, Bloomfield Lodge's chefs create a mouth - watering array of dishes from spicy Asian-style dishes to succulent North Queensland seafood, exotic game to juicy barbecued steaks. Immaculate presentation offers a feast for the eyes as well as the palate. Breakfast is a buffet of fresh fruit, juices and pastries and hot dishes prepared to order. Lunch a delicious set menu or a gourmet picnic for those out on an excursion or visiting a secluded local beach. The set evening menu is a tantalising three-course dinner or a sumptuous barbecue buffet.

All meals are included in the price of the stay and are served in the wonderful al fresco dining room overlooking the pool and gardens. The atmosphere is social and relaxed and guests can mingle and get to know each other over a bottle of wine.

Named after the respected explorer and gold prospector, James Venture Mulligan, Bloomfield Lodge's well-stocked bar is the perfect place to relax and exchange tales of the day's adventures over a refreshing drink or two. The help-yourself- and-keep-a-tab honour system reflects the informal, homely ambience.

Beautifully remote Bloomfield Lodge is located on the shores of the Coral Sea and set in the heart of the Daintree Rainforest. Whether you choose flight, helicopter or road transfers or even to drive yourself, you'll experience some of Australia's most beautiful and pristine scenery. Bloomfield Lodge can only be accessed directly from the sea so all guests (apart from

those arriving by helicopter) arrive by a short boat trip across Weary Bay.

Most guests arrive either by a scenic flight transfer from Cairns on Hinterland Aviation, landing on the grassy airstrip at Mount Louis Station, followed by a short road and boat transfer or they self drive.

If you choose to drive to Bloomfield from Cairns/ Port Douglas you may reach the Lodge via, either the inland route, which is a slightly longer but less challenging drive, or the coastal route which is a shorter distance, but requires a 4WD with challenging ascents and descents in places. At Port Bloomfield (just beyond Ayton), you can leave your vehicle in our secure storage unit, you will then be met by a boat and guide from the lodge for the short boat journey across Weary Bay.

Most guests stay for 4 to 5 days to take advantage of the many unique activities on offer at the Lodge and to fully experience the Wet Tropics Region of Far North Queensland. A stay at Bloomfield Lodge includes full board gourmet cuisine and the boat transfer across Weary Bay. For stays of 4 nights or more the guided rainforest walk and croc spotting river cruise are also included in the price.



www.bloomfieldlodge.com.au
(07) 4035 9166

diesel dust

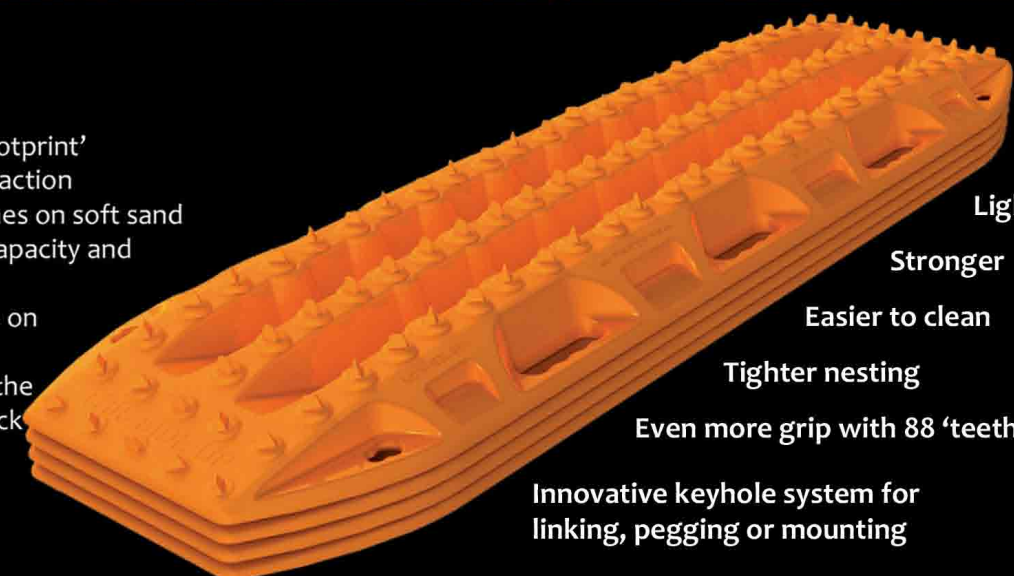
Introducing MAXTRAX MKII

MAXTRAX is the innovative, lightweight vehicle recovery device that's Australian designed & engineered, and rigorously tested and proven in the world's toughest offroad events and expeditions as the **SAFE, SIMPLE, QUICK** and **EASY** method of 4WD vehicle recovery.



MAXTRAX feature:

Excellent traction and a large 'footprint'
'Teeth' and ramps for superior traction
Suitable for vehicles up to 4 tonnes on soft sand
'Nestability' for additional load capacity and easy storage and transport
Large bottom cleats provide grip on slippery ground
Keyholes for linking, pegging to the ground or mounting on a roof rack
Six comfortable handles



Lighter

Stronger

Easier to clean

Tighter nesting

Even more grip with 88 'teeth'

Innovative keyhole system for linking, pegging or mounting

MAXTRAX

take the easy way out!



Please visit us @ www.maxtrax.com.au for your nearest retailer. While you're there, check out our new range of accessories and special colours.

